

Little Flower
Neighborhood
Association

Community
Powered
Infrastructure for
Safer Streets



Problems



Disregarding of basic traffic rules

Drivers in Little Flower frequently expose all road users to risk by disregarding speed limits, stop signs, and right of way.

Restricted sightlines at intersections

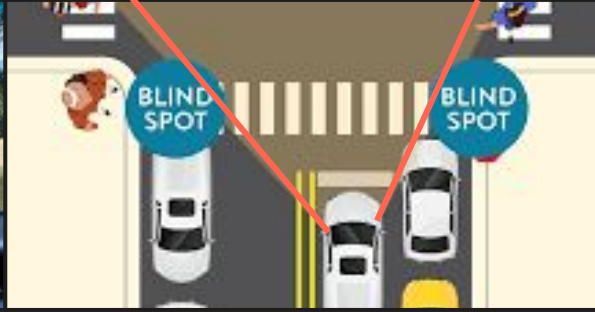
Street parking right up to an intersection inhibits road users' ability to see other approaching traffic.

Particular Problem Streets

Concern for streets bordering our schools: Bosart, 13th, Nowland

Other high-traffic streets:
Linwood, Euclid, Colorado, 11th

Goals



Reduce traffic speeds

Drivers pass through our neighborhood at speeds that are dangerous and possibly lethal. Current speed limits are not appropriate for a residential area.

Calming traffic to 15-20 MPH *greatly* reduces the chance of serious injury and fatality.

Improve intersection safety

Drivers often passing through an intersection at-speed without having a clear line-of-sight to the cross street.

We want to stop putting drivers, cyclists, and pedestrians unknowingly in harm's way.

Safer walkways & bikeways for neighbors & students

We all benefit from safer road conditions.

Toolbox

Vertical Delineation

A vertical post or similar structure that define areas in the streetscape and guide traffic.

Flexpost minimum cost: \$20 per unit

Boulder minimum cost: \$100 per unit plus shipping costs



Daylighting

Technique that improves safety by preventing cars from being parked near intersections and crosswalks.

Minimum cost: \$300-\$500 per intersection

Impact: *15-40% collision reduction at intersections.*



Toolbox

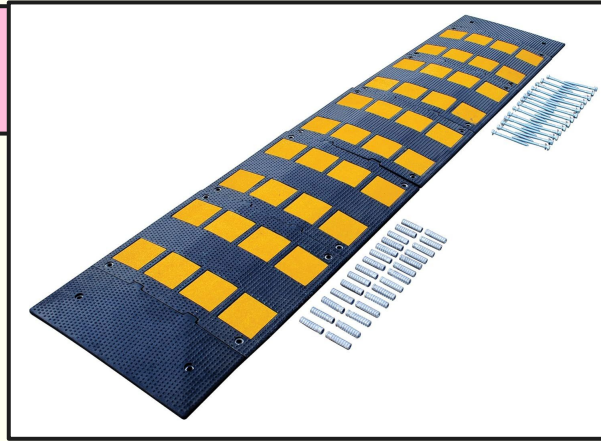
5

Speed Cushion

A raised area of pavement that slows traffic and is designed to allow emergency vehicles to pass without being impacted

Minimum cost: \$450 per unit

Impact: Reduces speed to 10-15 MPH



Point Closure

A specific point on a road is temporarily blocked to vehicle traffic.

Minimum cost: \$200 per closure

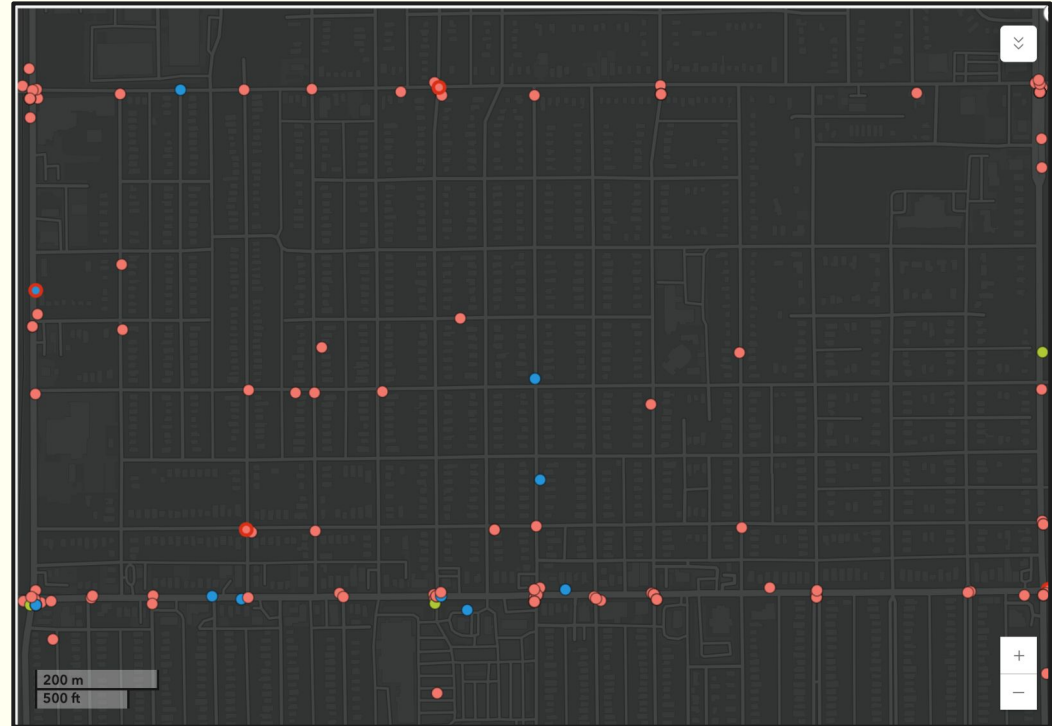
Impact: Diffuses and slows traffic



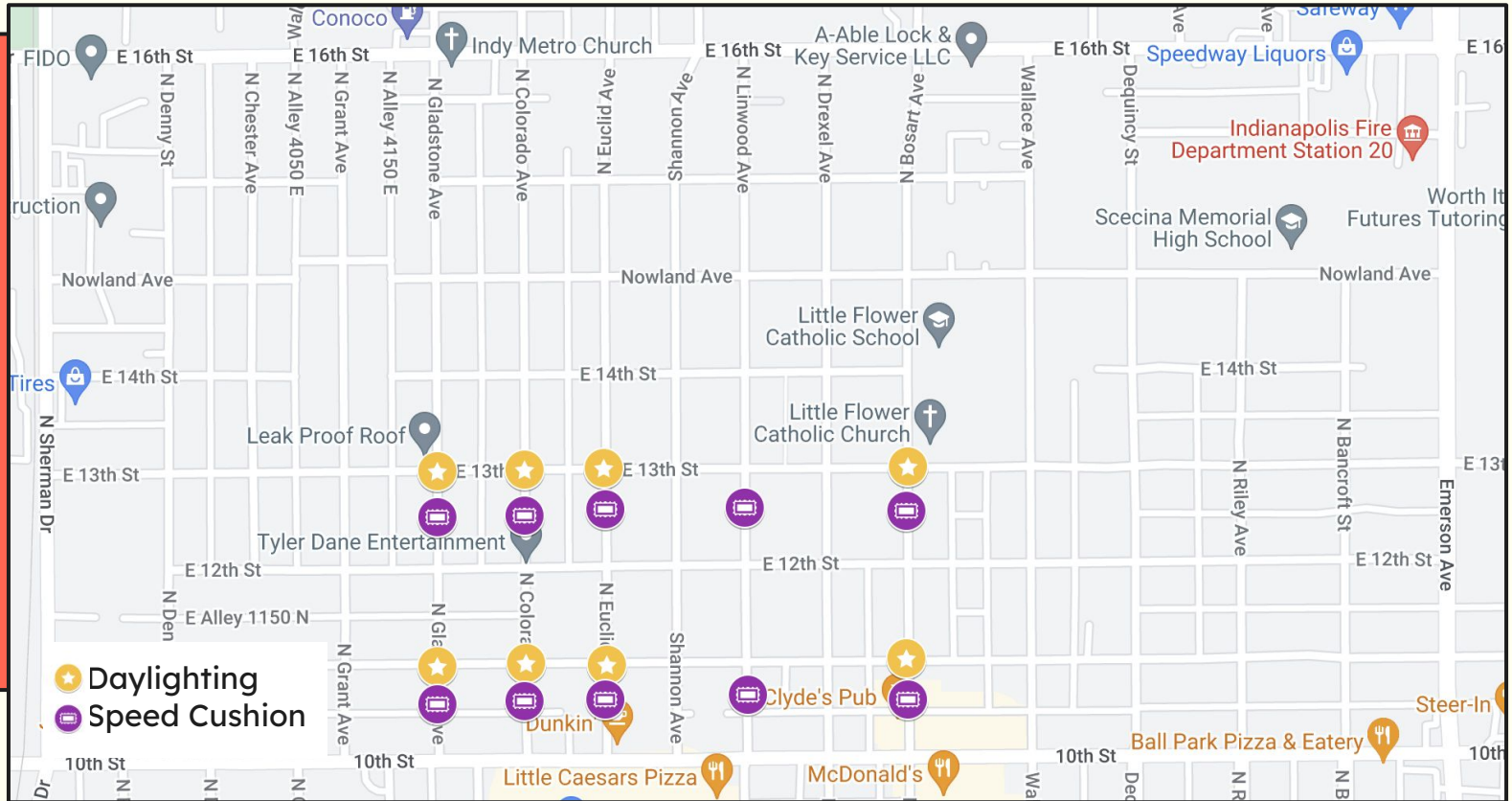
Safety interventions

6

- Collisions trend towards southern half of neighborhood
- Clusters on high traffic streets
- Goals of interventions may be
 - Slowing vehicles off of 10th street
 - Decreasing speed & increasing visibility at high-conflict intersections



Safety interventions



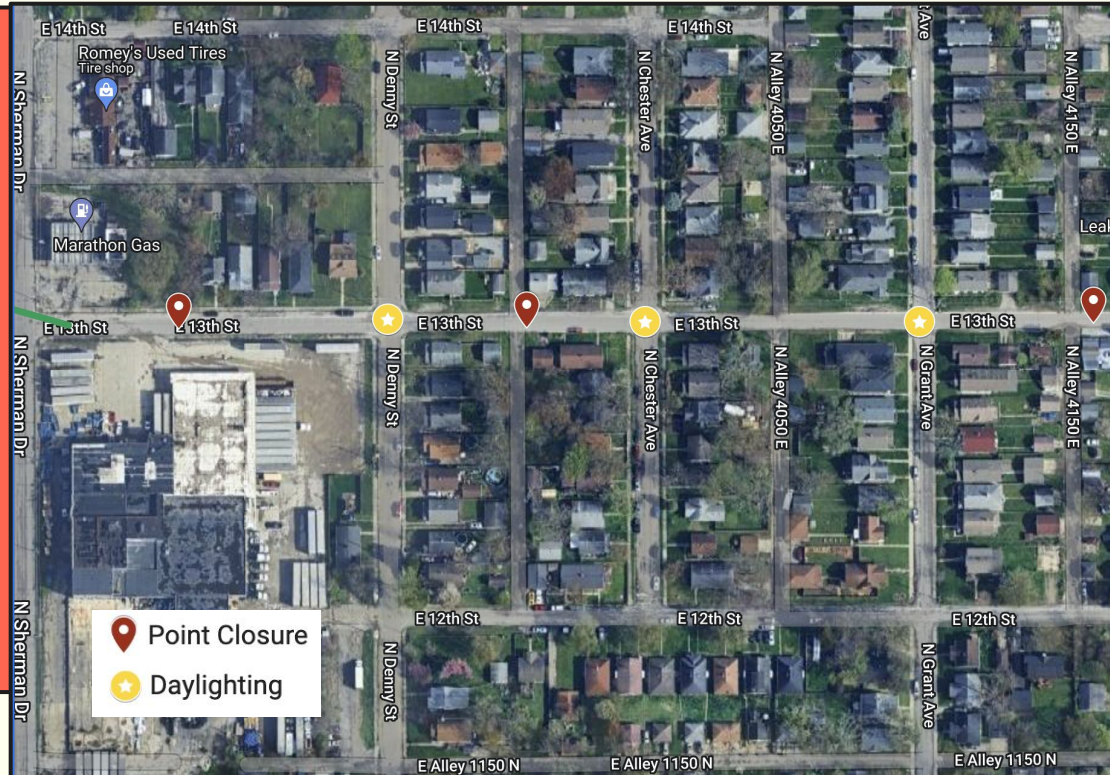
Linear Park on 13th St

13th is designated a “neighborway” by the city. We could create a low-traffic street for safer walking & cycling.

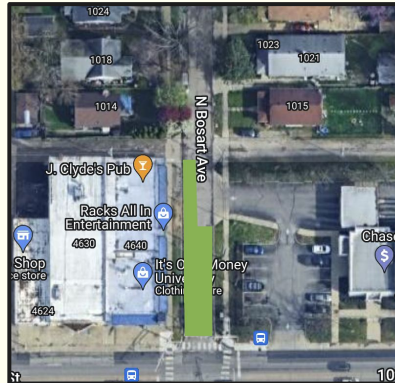
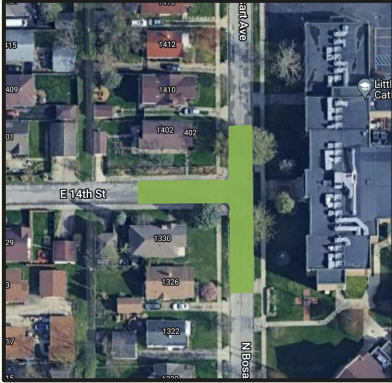
1. Stop signs changed to give right-of-way to 13th St.
2. Daylighting in intersections to reduce speeds.
3. Place point closures or speed cushions every few blocks to diffuse or slow through-traffic



This would connect with a proposed path on Sherman St., creating a safe connection to the trail and Brookside Park Neighborhood.

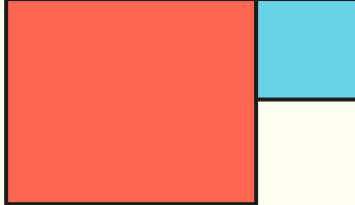


Bosart Parks



We could reclaim street space with point closures near 10th Street and at 14th in front of the school on Bosart to be used as “park” space:

- Creates a safe community space for Little Flower School and J Clyde’s
- Redirect cut through-traffic in front of school
- Reduces speed by requiring turns
- Creates a calmer street for residents



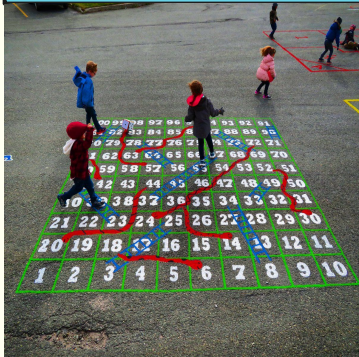
Possible Park Amenities

10

1.

Games

Using paint and adding interactive elements can bring joy to all ages.



2.

Shade

Shade sails can be used to give comfort from heat and rain.



3.

Seating

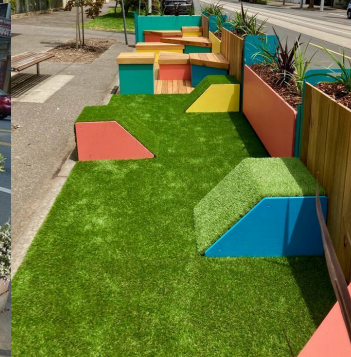
Having places to rest and enjoy a nice day is important for building community connections.



4.

Astroturf

Astroturf is a great way to create a “greenspace” on asphalt.



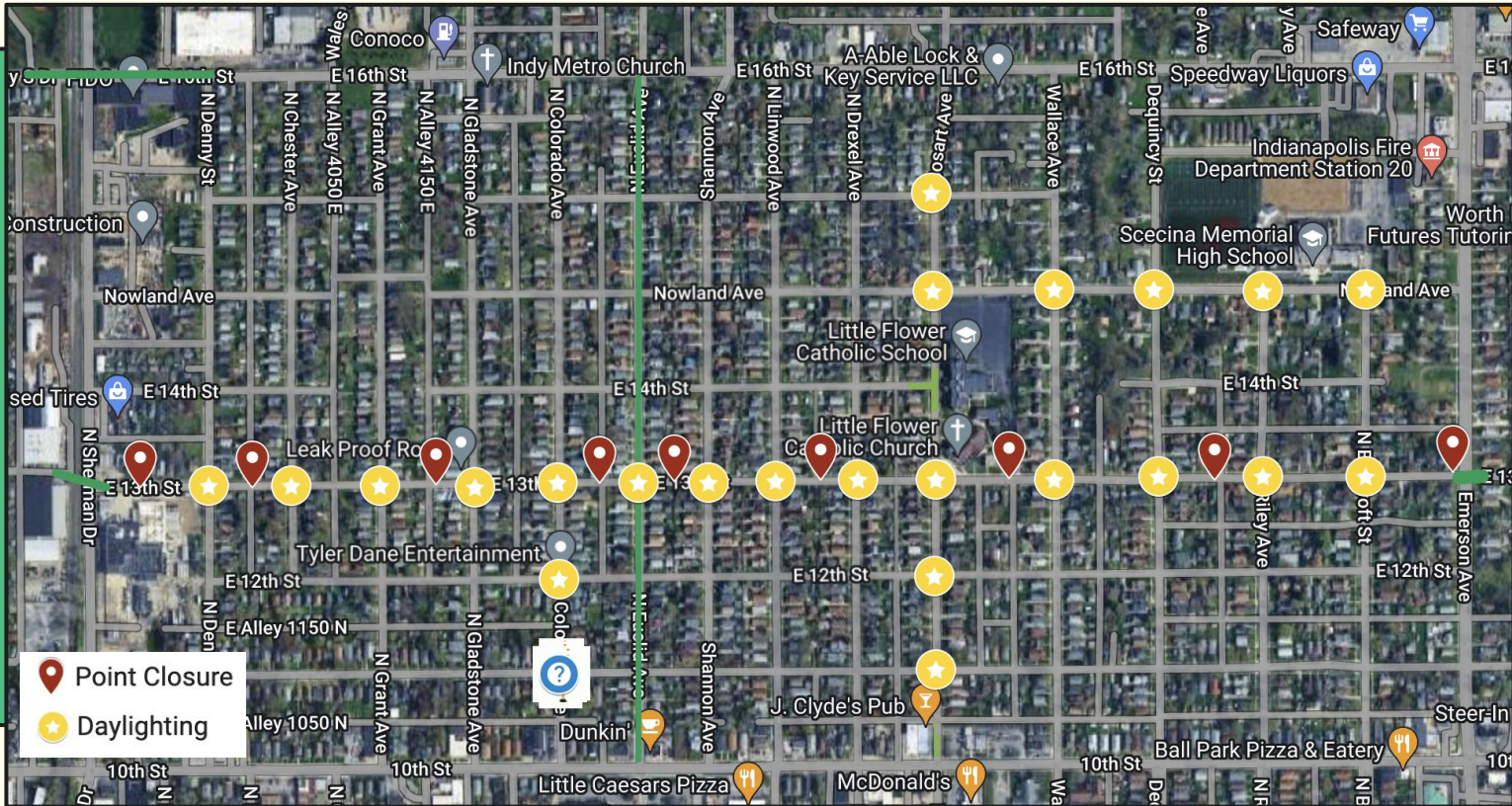
5.

Gathering

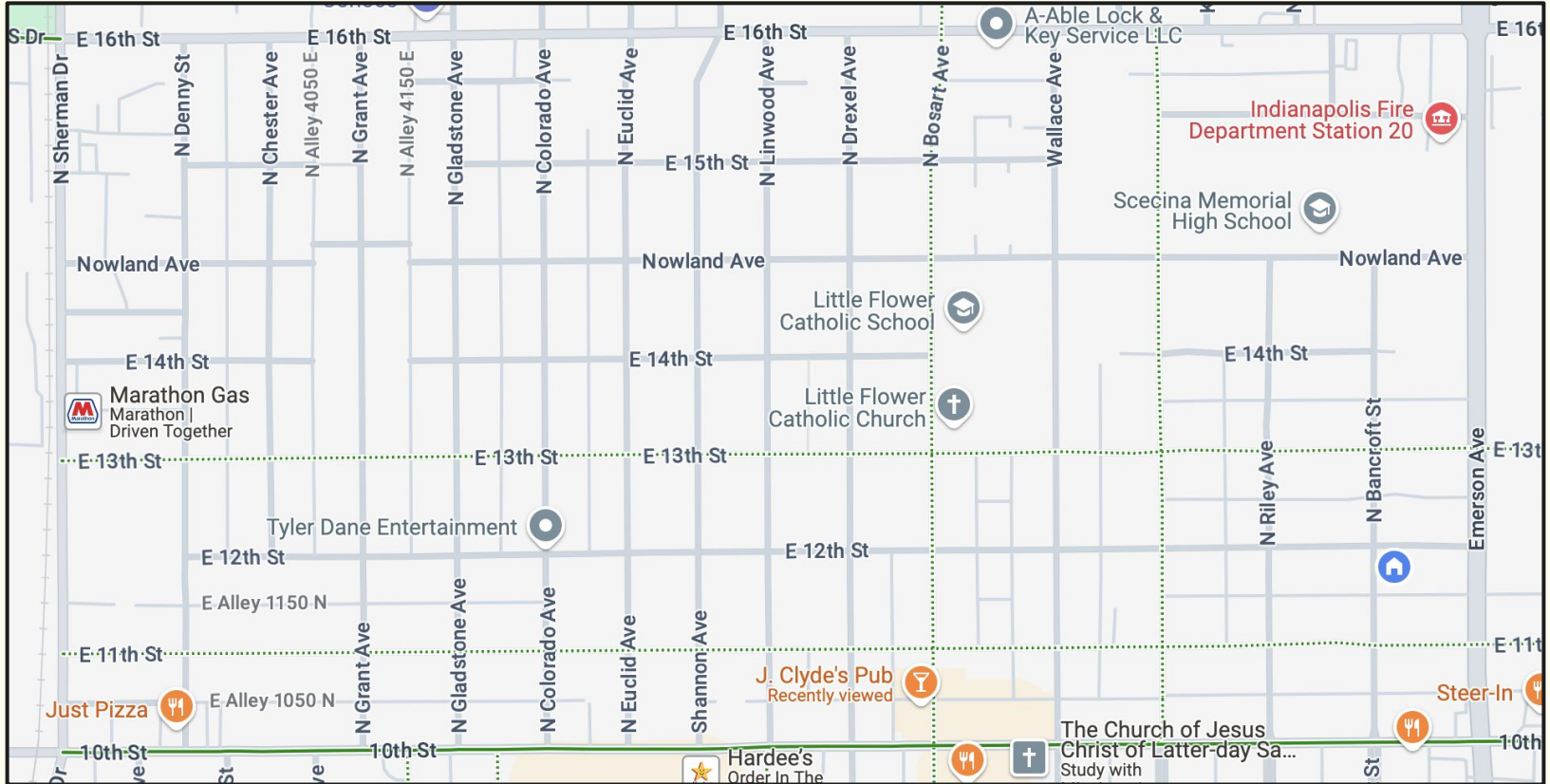
Create spaces for community gathering and outdoor classes for students.



Example of hybrid plan



What sticks out as a priority?



Next steps

Feedback from Neighbors & Stakeholders

We're meeting with neighbors & organizations to gather feedback and co-create a plan.

Finalize Project Scope

There are many solutions to consider. With your help, we can prioritize the most impactful ones and design the best solution for our neighborhood.

Apply for Funding

We're seeking a community powered infrastructure grant to which would provide 50/50 matching funds. We'll then raise our own funds to match.

Implement & Learn!

Q&A



Have more feedback?
Reach us via email at
littleflowerneighborhood@gmail.com